



Frederick Thomas
ELECTRICAL & MAINTENANCE LTD

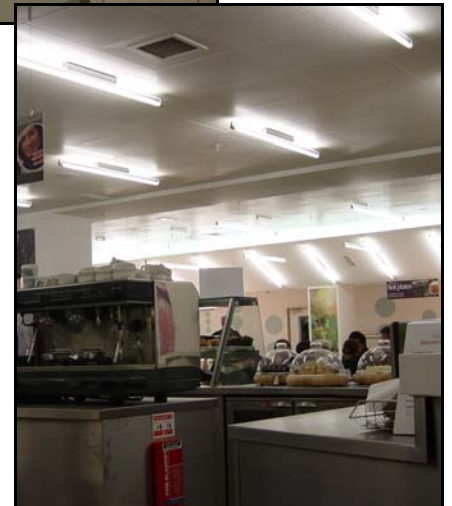
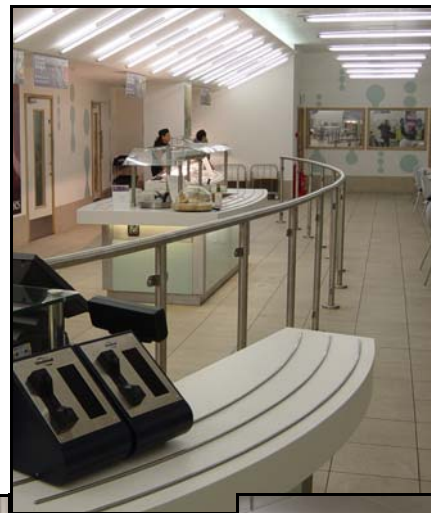
TERMINAL 5 STAFF RESTAURANTS

RESTAURANTS



Frederick Thomas Electrical and Maintenance Limited were part of the team involved in the construction of the new Terminal 5 Building at Heathrow Airport.

As part of the £4billion structure, which is Britain's largest single span building and has the capacity to handle approximately 65,000 passengers per day, Frederick Thomas Electrical & Maintenance Limited were selected to undertake the mechanical and electrical services installation for 8 no. staff restaurants to cater for BA and BAA personnel.





Frederick Thomas

ELECTRICAL & MAINTENANCE LTD

TERMINAL 5 STAFF RESTAURANTS

The Electrical Services comprised of the following:

- Main Distribution
- Lighting
- Emergency Lighting
- Small Power
- Containment
- Controls
- Earthing and Bonding
- Testing and Commissioning
- NICEIC Certification

The Mechanical Services comprised of the following:

- Air Conditioning
- Chilled Water
- Low Risk Supply and Extract Ductwork
- Hot and Cold Water Pipework
- Drainage
- Testing and Commissioning

Client: BA / BAA
Consultant: Rediger Limited
Main Contractor: Clifline Limited



REGISTERED MEMBER



Frederick Thomas Electrical & Maintenance Ltd



Frederick Thomas House
39 Belmont Road
Erith
Kent
DA8 1JY

Units 11/19
Attenbury's Park Estate
Attenbury's Lane
Timperley
Cheshire
WA14 5QE

Hereward House
19 Hereward Rise
Halesowen
West Midlands
B62 8AN



Tel: 01322 339990
Fax: 01322 339989
e-mail: mail@ft-ltd.co.uk

Tel: 0161 905 2302
Fax: 0161 905 2303
e-mail: manchester@ft-ltd.co.uk

Tel: 0121 504 9025
Fax: 0121 504 9021
e-mail: birmingham@ft-ltd.co.uk



Website: www.ft-ltd.co.uk