



Frederick Thomas
ELECTRICAL & MAINTENANCE LTD

RETAIL

NIKE - BOXPARK, SHOREDITCH



Frederick Thomas Electrical & Maintenance Ltd were proud to be involved in this unique concept in retail shopping within the world's first pop-up mall.

Boxpark comprises of some sixty steel shipping containers converted and re-modelled into retail units.

The works comprised of the fit-out of two large flag ship units at ground floor and first floor level belonging to the Anchor tenant Nike.

The design team at Nike had ambitious plans for the two retail units, despite the challenges of the unusual environment.

Frederick Thomas worked closely with the project team to ensure the smooth integration of the compact and sophisticated range of services installed within the units.



Frederick Thomas

ELECTRICAL & MAINTENANCE LTD

NIKE - BOXPARK, SHOREDITCH



The Electrical Installation included:

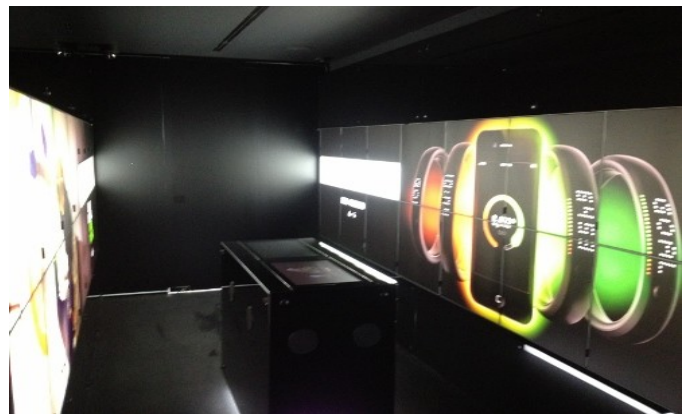
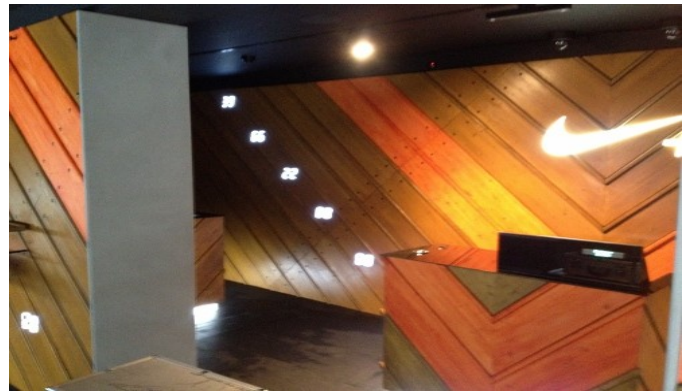
- Lighting and Emergency Lighting
- Small Power
- Air Conditioning
- Fire Alarm
- Mains Distribution
- Voice & Data Services
- Security, CCTV & Ancillary Services
- Audio/Visual Equipment Wiring
- Test & Certification to NICEIC Requirements

Client:

NIKE

Main Contractor:

RESOLUTION INTERIORS



REGISTERED MEMBER



Frederick Thomas Electrical & Maintenance Ltd
Tel: 01322-339990 email: mail@ft-ltd.co.uk

